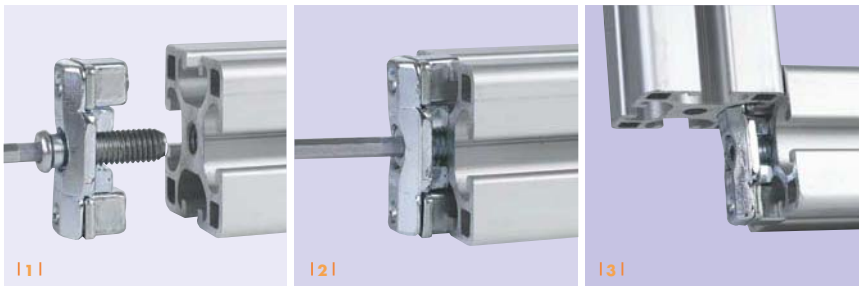
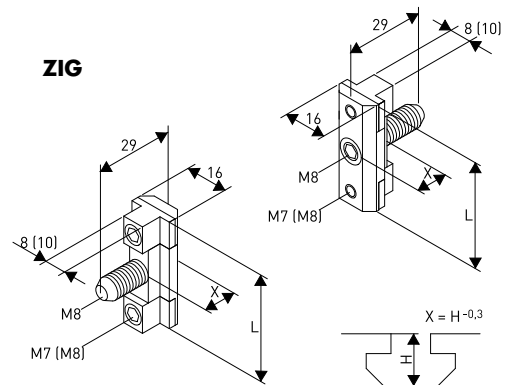


Mega Connectors ZIG & ZIG-A

For Profiles with
8 and 10mm T-Slots

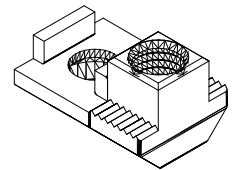


- 1 Fit the ZIG / ZIG-A into the central core of the first strut
- 2 Tightly secure the ZIG / ZIG-A with the screw
- 3 Slot section 2 onto the ZIG / ZIG-A and tighten set screws in the desired position

Advantages

- » Easy assembly WITHOUT the need to pre-treat the struts
- » Time and cost savings due to quick assembly
- » Pre-assembled connector for immediate application
- » Twist-proof connection
- » Notching of the panel elements is no longer necessary
- » Force- and form fit connection
- » Re-positionable / adjustable
- » ESD capable
- » For use with all popular profiles
- » Flexible positioning within the strut
- » Also suitable for the connection of larger profiles (80mm, 90mm, 100mm)
- » Patented Allfest-product
- » QUICKLY – EASILY – ECONOMICALLY ASSEMBLED!

ZIG-A



Application

The mega-connectors ZIG and ZIG-A are intended for heavy-duty connections of aluminium sections with 8 and 10mm T-slots. They are ideal for use in sections with a thin-walled core.

Tools required

- » Standard Allen Key SW4



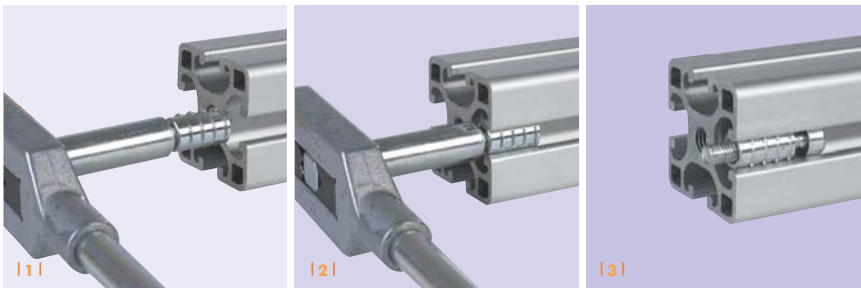
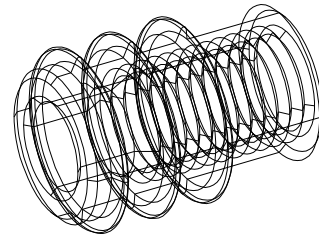
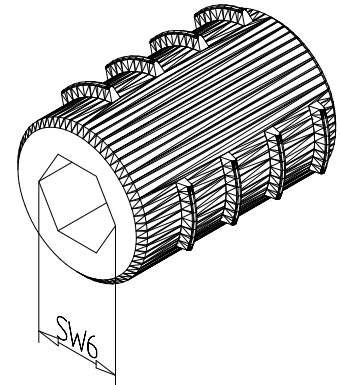
Allfest GmbH

www.allfest.de

... the strong connection!

Bayonet Connector BAV

For Profiles with
8 and 10mm T-Slots



- 1 | Mount the BAV onto a SW6,0 punch and insert it into the T-slot until the punch touches the strut
- 2 | Now, using a tap wrench, turn it 60° to the **left** until the three notches are spread out evenly
- 3 | The notches are slightly compressed, thus preventing rotation of the BAV when tightening the screw

Advantages

- » Easy assembly WITHOUT the need to machine-treat the struts
- » Time and cost savings due to quick assembly
- » Pre-assembled connector for immediate application
- » Twist-proof connection (use of BAVs in pairs is recommended)
- » Force- and form fit connection
- » Can be inserted into existing structures - no need for disassembly
- » Re-positionable / adjustable within an existing structure
- » ESD capable
- » For use with all popular profiles
- » Flexible positioning within the section
- » Simple, vertical assembly
- » Patented Allfest-product
- » QUICKLY – EASILY – ECONOMICALLY ASSEMBLED!

Application

The bayonet connector BAV is intended for heavy-duty connections of aluminium struts with 8 and 10mm T-slots with suitable T-slot shape and material strength.

Tools required

- » Screw-tool SW6,0
- » Standard Allen Key SW5



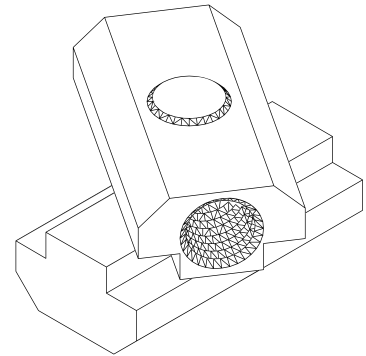
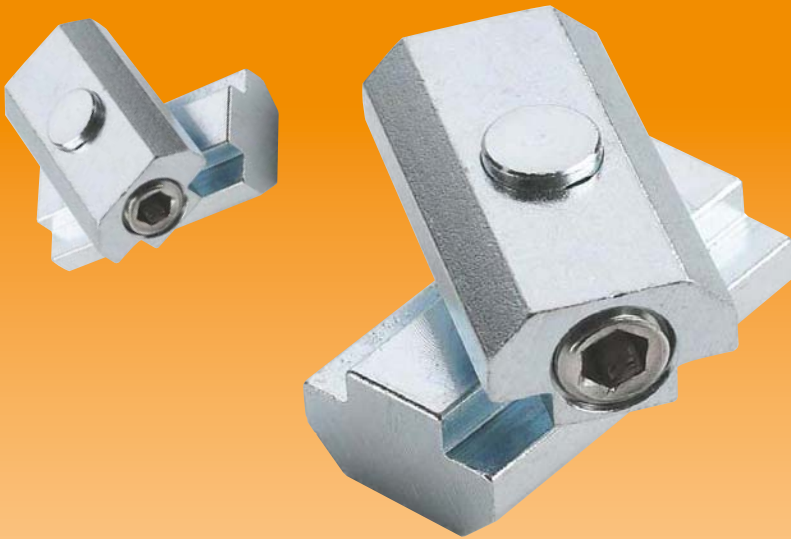
Allfest GmbH

www.allfest.de

... the strong connection!

Parallel Connector PVB

For Profiles with
8 and 10mm T-Slots



- 1 After loosening the DIN 914 screw, slide the lower part of the PVB into section 1.
 - 2 Slide the second part of the PVB into the required slot of the second strut. The struts can now be moved into any position.
 - 3 Once the sections are in their required positions, simply tighten the screws.
- Dismantling** – Loosen the DIN 914 screw and slide out the PVB.

Advantages

- » Easy assembly WITHOUT the need to pre-treat the struts
- » Time and cost savings due to quick assembly
- » Pre-assembled connector for immediate application
- » Re-positionable / adjustable within an existing structure
- » For use in cross-connections
- » For use with all popular profiles
- » For flexible positioning within the strut
- » Protected Allfest-product
- » QUICKLY – EASILY – ECONOMICALLY ASSEMBLED!

Application

The plug-in connector PVB is intended for light duty connections of aluminium sections with T-slots of 8 and 10mm. The sections may be turned and moved into any position.

Tools required

- » Standard Allen Key SW4



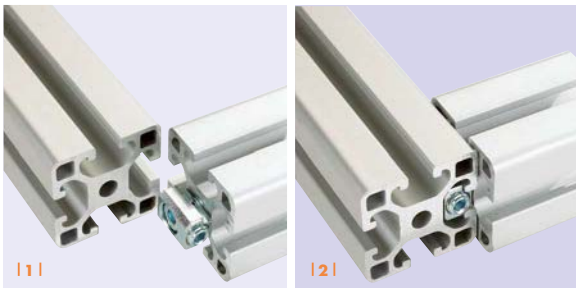
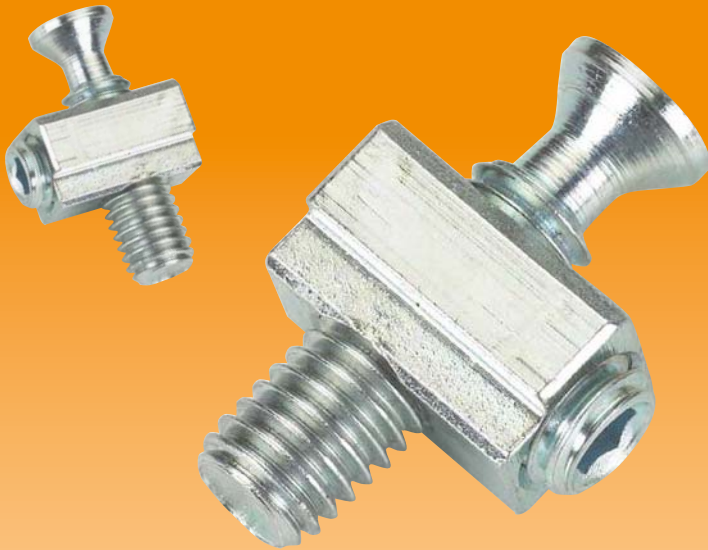
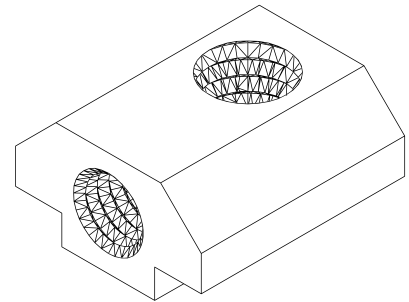
Allfest GmbH

www.allfest.de

... the strong connection!

Core Connector ZV

For Profiles with
8 and 10mm T-Slots



- 1 | Lightly fix the ZV into the central core of the first strut
2 | Slot section 2 onto the ZV and tighten set screw

Advantages

- » Easy assembly WITHOUT the need to pre-treat the struts
- » Time and cost savings due to quick assembly
- » Pre-assembled connector for immediate application
- » One of the sections remains turnable.
- » Notching of panel elements is no longer necessary
- » Force- and form fit connection
- » Re-positionable / adjustable within an existing structure
- » For use with all popular profiles
- » Flexible positioning within the section
- » Protected Allfest-product
- » QUICKLY – EASILY – ECONOMICALLY ASSEMBLED!

Application

The core connector ZV has been developed for heavy duty connections of aluminium profiles with 8 and 10mm T-slots. One section can hereby be turned into any direction, thus allowing for specific requirements. The T-slots of two opposing sides remain free, allowing for the insertion of panel elements. It's perfect for building losed boxes.

Tools required

- » Standard Allen Key SW4



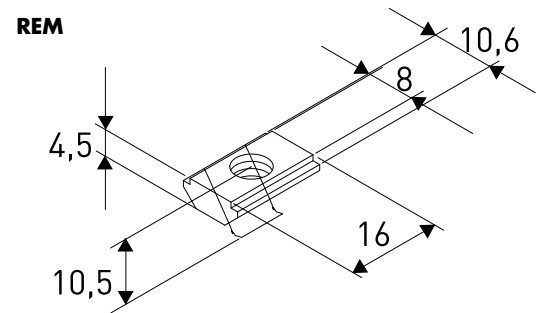
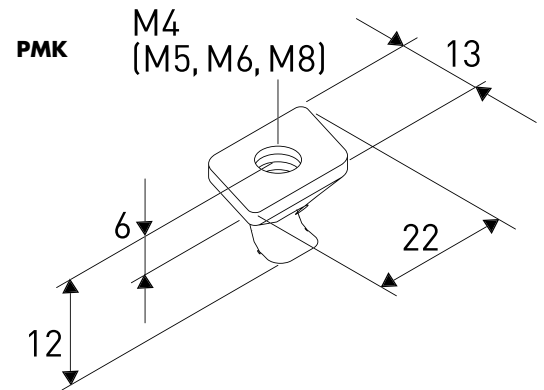
Allfest GmbH

www.allfest.de

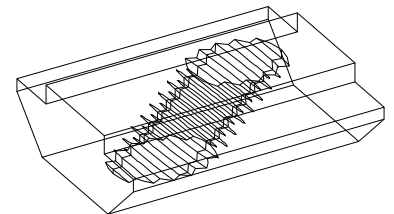
... the strong connection!

T-nuts

For Profiles with
6, 8 and 10mm T-Slots



T-NUT 45°



- 1 With the spring plate facing upwards...
- 2 ...insert the nut into the T-slot
- 3 ... then press it into the inner slot and move it into the required position

Advantages

- » Time and cost savings due to quick assembly
- » Can be inserted into existing constructions without disassembly
- » Re-positionable / adjustable within an existing structure
- » Flexible positioning within the strut (can be slotted in anywhere)
- » Easy, vertical assembly through spring plate
- » QUICKLY – EASILY – ECONOMICALLY ASSEMBLED!

Application

The T-nuts have been designed for profiles with 6, 8 and 10mm T-slots. They are available with M4, M5, M6 and M8 thread and fit almost any profile.

Tools required

- » Standard Allen Key



Allfest GmbH

www.allfest.de

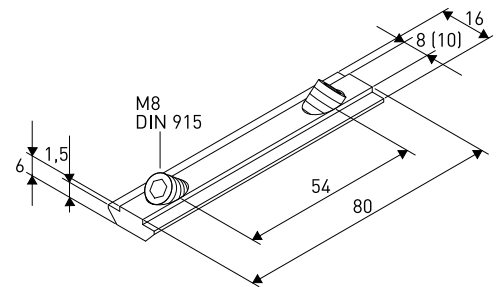
... the strong connection!

Butt-joint Connector STV

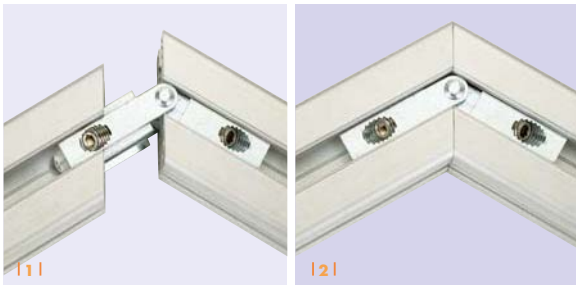
Hinge Connector GV

For Profiles with
8 and 10mm T-Slots

STV



- 1 | Once notches have been indented into the base of the T-slot, the STV can be inserted and tightened with the inclined set screw
- 2 | Slot on section 2
- 3 | Set by tightening the set screw



- 1 | Insert one or two GV into the struts which have been cut to the required angle. Tighten the screw in the first section
- 2 | Slide on section 2 and tighten the inclined set screw. This action pulls the two sections together.

Advantages

- » Easy assembly WITHOUT the need to machine-treat the struts
- » Time and cost savings due to quick assembly
- » Pre-assembled connector for immediate application
- » Twist-proof connection
- » Force- and form fit connection
- » ESD capable
- » For use with all popular profiles with a sufficiently strong core
- » The number of T-slots is irrelevant
- » Flexible positioning within the strut
- » Customised dimensions upon request
- » Patented Allfest-product
- » QUICKLY – EASILY – ECONOMICALLY ASSEMBLED!

Application

The connectors STV and GV are intended for heavy-duty connections of aluminium sections with 8 and 10mm T-slots.

Mit dem Gelenkverbinder GV können stirnseitige Verbindung von Profilen ab 180° bis auf 90° in beliebiger Gradzahl realisiert werden.

Tools required

- » Notch tool for STV / GV
- » Standard Allen Key SW4



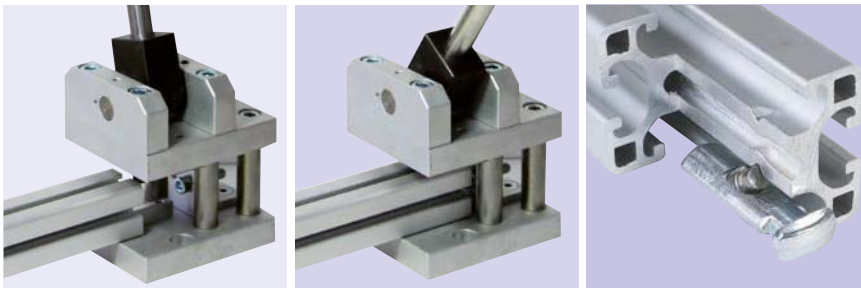
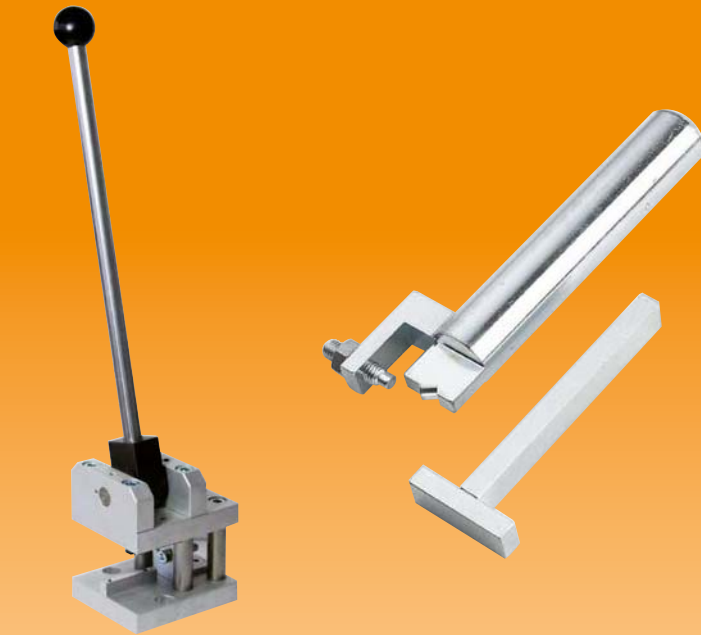
Allfest GmbH

www.allfest.de

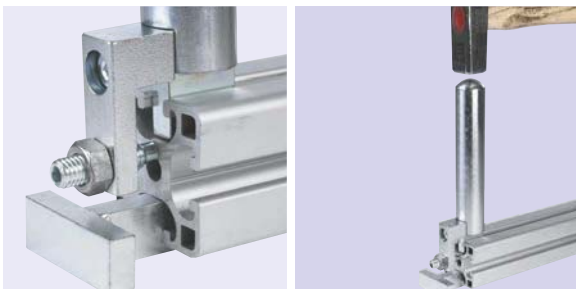
... the strong connection!

Notching tools

For ZAK, STV and GV



- 1 | Adjust the set screw of the notching device so that the tip of the punch touches the ground of the T-slot approx. 2mm in front of the desired spot for the imprint. Insert the section as far as it will go
- 2 | ... and forcefully pull the lever
- 3 | Inside view



- 1 | Place the section onto a base and fix the notching tool with the set screw at the face side of the section
- 2 | Use a hammer to create a notch

Application

The notching device for the ZAK, STV and GV is intended for the preparation of profiles prior to the implementation of the connectors. Pressing the lever creates a notch in the base of the T-slot which allows for a strong connection of two profiles.

The notching tool for the ZAK and the STV is intended for the preparation of profiles prior to the implementation of the connector. A tap with a hammer creates a notch in the base of the T-slot which allows for a strong connection of two profiles.



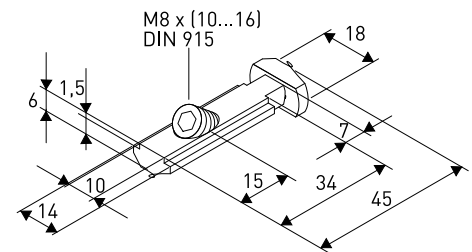
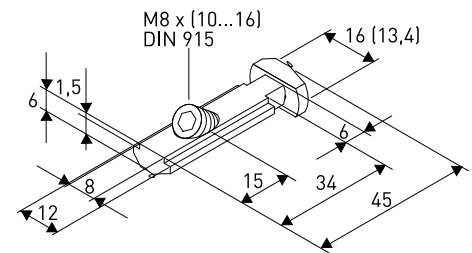
Allfest GmbH

www.allfest.de

... the strong connection!

Mega Connector ZAK

For Profiles with
8 and 10mm T-Slots



- 1 In order to apply the ZAK mega-connector, a notch will have to be indented into the base of the relevant T-slot
- 2 The pre-assembled ZAK can now be inserted into the T-slot and can be secured lightly with the integrated screw.
- 3 Slot the top of the ZAK into the strut to be connected and secure it in the required position

Advantages

- » Easy assembly WITHOUT the need to machine-treat the struts
- » Time and cost savings due to quick assembly
- » Pre-assembled connector for immediate application
- » Twist-proof connection (when using two ZAKs on the face side)
- » Force- and form fit connection
- » Can be inserted into existing structures - no need for disassembly
- » Re-positionable / adjustable within an existing structure
- » ESD capable
- » For use with all popular profiles with a sufficiently strong core
- » The number of T-slots is irrelevant
- » Flexible positioning within the strut
- » Patented Allfest-product
- » QUICKLY – EASILY – ECONOMICALLY ASSEMBLED!

Application

The mega-connector ZAK is intended for heavy-duty connections of aluminium sections with 8 and 10mm T-slots.

Tools required

- » Notch tool for ZAK
- » Standard Allen Key SW4



Allfest GmbH

www.allfest.de

... the strong connection!